

# Fabric catalogue

## cabb-in

For our Cabb-ins, a high-quality and sustainable fabric is essential. That is why we frequently use Salana fabrics, which are made from 90% recycled PET material. This choice is not only a step towards a more sustainable future, but also results in an exceptionally strong upholstery fabric. In this way, we contribute to the protection of our planet, without compromising on quality and durability.





# Salana



(SAL001) Aluminium



(SAL002) Grey



(SAL003) Thunder



(SAL004) Anthracite

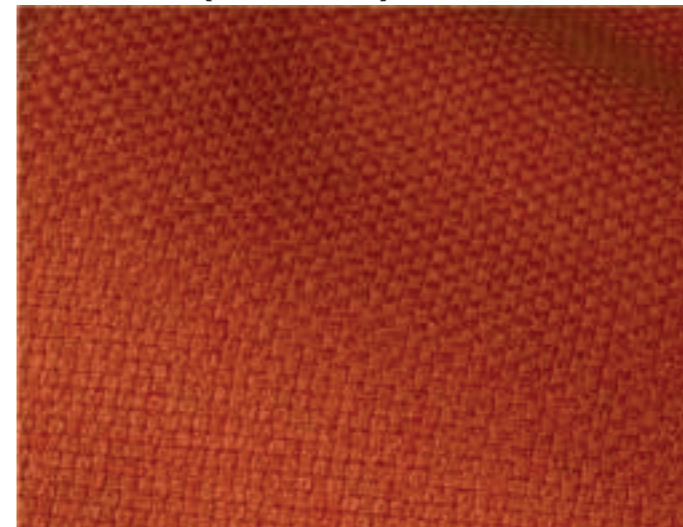
# Salana



(SAL005) Black



(SAL008) Red



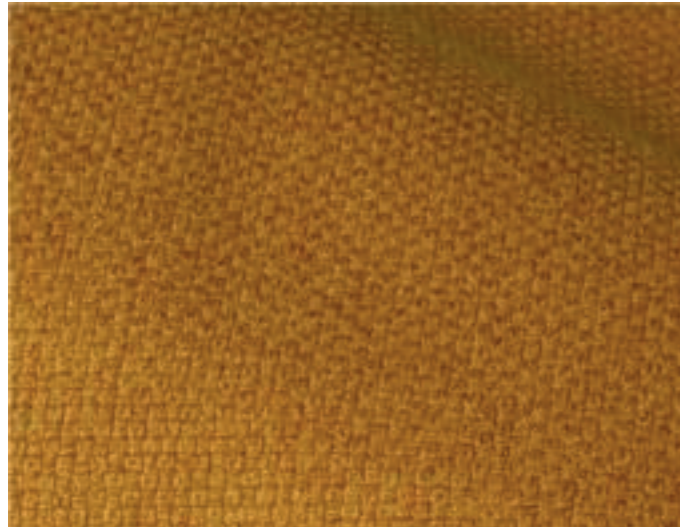
(SAL009) Orange



(SAL010) Caramel



# Salana



(SAL011) Ocre



(SAL012) Mint



(SAL013) Petrol



(SAL014) Atlantic Blue

# Salana



(SAL015) Blue



(SAL017) Offwhite



(SAL018) Sand



(SAL019) Taupe

# Salana



**(SAL020) Chocolate**

## TECHNICAL SPECIFICATIONS

Material	100% Rpet fleece backing
Colour	17
Weight	360 gr/m2
Fire test	EN 1021-1:2014   Cigarette & Match
Lightfastness	ISO 105-B02:2014; meth. 2   5 Blue scale
Spraytest	ISO 4920:2012   4
Martindale test	ISO 12947-2:2016   70.000 cycles